



**Furniture & Appliance
Legs – Adjustable Metal**

IEC's adjustable metal legs are available in stainless steel (-SS) and black ABS plastic (-BLK).

IL635, IL638 and IL640 have 3/4" of adjustment. IL636, IL637 and IL639 have 1-3/4" adjustment.

IL636 thru IL640 have a 2000 lb load rating (NSF certified). IL635 and IL641 have a 500 lb load rating.



**Stainless Steel Tubing Feet
with Adjustable Legs**

These round and square stainless steel tubing feet are made to fit 16-18 ga tubing. The foot has hex flats and can be raised 1-1/8" inches from the minimum height shown ("C" dimension). The housing that fits inside the tube is zinc die cast (Zamak). The foot is clad with 304 SS. NSF certified.

IL636-PLT (shown below)

The plate for the IL636 foot is a 3-1/2" (89 mm) SQUARE STEEL PLATE, 1/8" THICK, GALVANIZED, WITH 1/2-13 THREADED CENTER HOLE, 4 CORNER HOLES, 5/16" DIA, SPACED 67 MM (2-5/8") apart. This plate is included when ordering the IL637 legs. (+638)



METAL — ADJUSTABLE LEGS

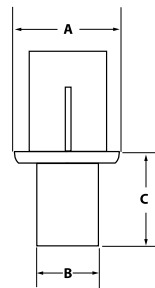
P/N	LEG HEIGHT	THREAD/ PLATE SZ.	WEIGHT (LB)
IL635X4-6X38-MN	4	3/8-16 x 3/8	.75

Adjustment = 3/4". 1-7/16 wide across top hex flats with 1-1/4" foot diameter.

METAL — ADJUSTABLE LEGS

P/N	LEG HEIGHT	THREAD/ PLATE SZ.	WEIGHT (LB)
IL636X4-7X75-SS	4	1/2-13 x 3/4	.75
IL636X6-7X75-SS	6	1/2-13 x 3/4	1.0

Adjustment = 1-3/4". Stainless steel leg is 1-5/8" diameter. Adjustable foot is 1-1/4" diameter with 6 wrench flats. Also available with 2" diameter shell.



ROUND & SQUARE SS TUBING FEET

P/N	A	B	C
IL27-636-RD-SS	1-1/2	1-1/8	1-1/2
IL27B2-636-RD-SS	1-5/8	1-1/8	1-1/2
IL27A-636-RD-SS	2	1-9/16	1-1/2
IL27-636-SQ-SS	1-1/2	1-1/8	1-1/2
IL27B2-636-SQ-SS	1-5/8	1-1/8	1-1/2
IL27A-636-SQ-SS	2	1-9/16	1-1/2

METAL — ADJUSTABLE LEGS

P/N	LEG HEIGHT	THREAD/ PLATE SZ.	WEIGHT (LB)
IL637X4-SS	4	3-1/2 SQ	.75
IL637X6-SS	6	3-1/2 SQ	1.0

Adjustment = 1-3/4". Stainless steel leg is 1-5/8" diameter. Adjustable foot is 1-1/4" diameter with 6 wrench flats. Also available with 2" diameter shell.



**Furniture & Appliance
Metal & ABS Plastic Legs**

IEC's metal and plastic adjustable legs are available in stainless steel (-SS), and black ABS plastic (-BLK).

IL635, IL638 and IL640 have 3/4" of adjustment. IL636, IL637 and IL639 have 1-3/4" adjustment.

IL636 thru IL639 have a 2000 lb load rating (NSF certified). IL635 and IL640 have a 500 lb load rating.



METAL — ADJUSTABLE LEGS

P/N	LEG HEIGHT	THREAD/ PLATE SZ.	WEIGHT (LB)
IL638X4-SS	4	3-1/2 SQ	.75
IL638X6-SS	6	3-1/2 SQ	1.0

Adjustment = 3/4". Top of leg is 2-1/4" in diameter. Adjustable foot diameter is 1".



ABS PLASTIC — ADJUSTABLE LEGS

P/N	LEG HEIGHT	THREAD/ PLATE SZ.	WEIGHT (LB)
IL638X6-BLK	6	3-1/2 SQ	1.0

Adjustment = 3/4". Top of leg is 2-1/4" in diameter. Adjustable foot diameter is 1".



METAL — ADJUSTABLE LEGS

P/N	LEG HEIGHT	THREAD/ PLATE SZ.	WEIGHT (LB)
IL639X4-6x75-SS	4	3/8-16 x 3/4	1.0
IL639X4-7x75-SS	4	1/2-13 x 3/4	1.0
IL639X6-7x75-SS	6	1/2-13 x 3/4	1.5
IL639X6-8x75-SS	6	5/8-11 x 3/4	1.5
IL639X6-9x75-SS	6	3/4-10 x 3/4	1.5

Adjustment = 1-3/4". 2" diameter SS shell over high strength black plastic body with non-marring black plastic foot.



ABS PLASTIC — ADJUSTABLE LEGS

P/N	LEG HEIGHT	THREAD/ PLATE SZ.	WEIGHT (LB)
IL640X4-6x1/2-BLK	4	3/8-16 x 1/2	.5
IL640X4-6x1/2-NKL	4	3/8-16 x 1/2	.5

Adjustment = 1". Top diameter of plastic leg is 2", as is the solid metal, nickel plated foot, with two wrench flats.