



**INTERNATIONAL EQUIPMENT COMPONENTS, INC.**

Phone: **562.597.4533** eMail: **sales@iec-corp.com**

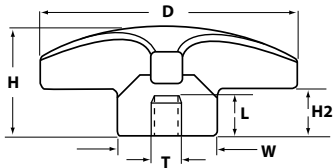
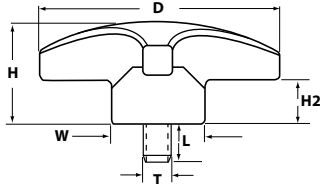
Web: **www.levelingmounts.com & www.iec-corp.com**

**KNOBS**

**3 & 4 LOBE KNOBS**

**3 & 4 Lobe Knobs**

Phenolic 3 and 4-lobe knobs are offered with a brass threaded insert, a zinc-plated steel stud or a stainless steel stud.



**THERMOPLASTIC 3 LOBE KNOB WITH STEEL STUD**

P/N	DIA.	Height	Width	H2	Thread	Length
IL427A-5X1	2-1/2	1-1/8	7/8	1/2	5/16-18	1
IL427A-6X1	2-1/2	1-1/8	7/8	1/2	3/8-16	1
IL427A-7X1	2-1/2	1-1/8	7/8	1/2	1/2-13	1
IL427B-5X118	3-3/8	1-1/2	1-3/16	5/8	5/16-18	1-3/16
IL427B-6X118	1-1/2	1-1/2	1-3/16	5/8	3/8-16	1-3/16
IL427B-7X118	1-1/2	1-1/2	1-3/16	5/8	1/2-13	1-3/16
IL427C-6X118	2	1-3/4	1-3/8	3/4	3/8-16	1-3/16
IL427C-7X118	2	1-3/4	1-3/8	3/4	1/2-13	1-3/16
IL427C-8X118	2	1-3/4	1-3/8	3/4	5/8-11	1-3/16

**PHENOLIC 4 LOBE KNOB WITH BRASS THREADED INSERT**

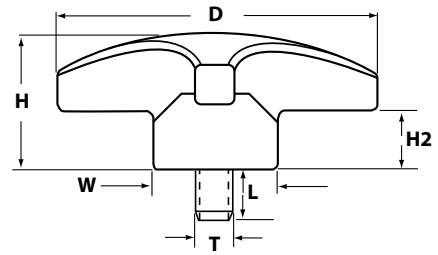
P/N	DIA.	Height	Width	H2	Thread	Length
IL430-2X38	1	5/8	1/2	11/32	8-32	3/8
IL430-3FX38	1	5/8	1/2	11/32	10-32	3/8
IL430-3X38	1	5/8	1/2	11/32	10-24	3/8
IL430-4X38	1	5/8	1/2	11/32	1/4-20	3/8
IL431-3FX38	1-1/4	25/32	21/32	15/32	10-32	3/8
IL431-4X38	1-1/4	25/32	21/32	15/32	1/4-20	3/8
IL431-5X50	1-1/4	25/32	21/32	15/32	5/16-18	1/2
IL432-4X38	1-1/2	1	27/32	19/32	1/4-20	3/8
IL432-5FX50	1-1/2	1	27/32	19/32	5/16-24	1/2
IL432-5X50	1-1/2	1	27/32	19/32	5/16-18	1/2
IL432-6FX50	1-1/2	1	27/32	19/32	3/8-24	1/2
IL432-6X50	1-1/2	1	27/32	19/32	3/8-16	1/2
IL433-4X38	2	1-1/4	1	3/4	1/4-20	3/8
IL433-5FX50	2	1-1/4	1	3/4	5/16-24	1/2
IL433-5X50	2	1-1/4	1	3/4	5/16-18	1/2
IL433-6FX50	2	1-1/4	1	3/4	3/8-24	1/2
IL433-6X50	2	1-1/4	1	3/4	3/8-16	1/2
IL433-7FX75	2	1-1/4	1	3/4	1/2-20	3/4
IL433-7X75	2	1-1/4	1	3/4	1/2-13	3/4
IL434-5FX50	2-1/2	1-19/32	1-9/32	15/16	5/16-24	1/2
IL434-5X50	2-1/2	1-19/32	1-9/32	15/16	5/16-18	1/2
IL434-6FX50	2-1/2	1-19/32	1-9/32	15/16	3/8-24	1/2
IL434-6X50	2-1/2	1-19/32	1-9/32	15/16	3/8-16	1/2
IL434-7FX75	2-1/2	1-19/32	1-9/32	15/16	1/2-20	3/4
IL434-7X75	2-1/2	1-19/32	1-9/32	15/16	1/2-13	3/4
IL435-6FX50	3-1/8	2	1-21/32	1-3/16	3/8-24	1/2
IL435-6X50	3-1/8	2	1-21/32	1-3/16	3/8-16	1/2
IL435-7FX75	3-1/8	2	1-21/32	1-3/16	1/2-20	3/4
IL435-7X75	3-1/8	2	1-21/32	1-3/16	1/2-13	3/4



**KNOBS**  
**4 LOBE KNOBS**

**4 Lobe Knobs**

Phenolic 4-lobe knobs are offered with a brass threaded insert, a zinc-plated steel stud or a stainless steel stud..



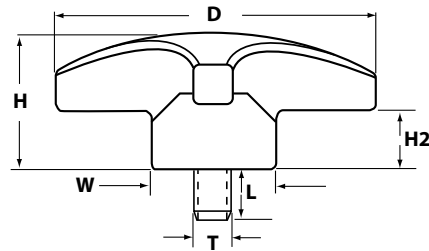
**PHENOLIC 4 LOBE KNOB WITH ZINC PLATED STEEL STUD**

P/N	DIA.	Height	Width	H2	Thread	Length
IL440-3FX50	1	5/8	1/2	11/32	10-32	1/2
IL440-3X50	1	5/8	1/2	11/32	10-24	1/2
IL440-4X50	1	5/8	1/2	11/32	1/4-20	1/2
IL441-3FX75	1-1/4	25/32	21/32	15/32	10-32	3/4
IL441-4X75	1-1/4	25/32	21/32	15/32	1/4-20	3/4
IL441-5X50	1-1/4	25/32	21/32	15/32	5/16-18	1/2
IL441-5X75	1-1/4	25/32	21/32	15/32	5/16-18	3/4
IL442-4X50	1-1/2	1	27/32	19/32	1/4-20	1/2
IL442-4X1	1-1/2	1	27/32	19/32	1/4-20	1
IL442-5X50	1-1/2	1	27/32	19/32	5/16-18	1/2
IL442-5X1	1-1/2	1	27/32	19/32	5/16-18	1
IL443-4X1	2	1-1/4	1	3/4	1/4-20	1
IL443-5X50	2	1-1/4	1	3/4	5/16-18	1/2
IL443-5X1	2	1-1/4	1	3/4	5/16-18	1
IL443-6FX75	2	1-1/4	1	3/4	3/8-24	3/4
IL443-6X75	2	1-1/4	1	3/4	3/8-16	3/4
IL443-6X1	2	1-1/4	1	3/4	3/8-16	1
IL443-6X150	2	1-1/4	1	3/4	3/8-16	1-1/2
IL443-6X2	2	1-1/4	1	3/4	3/8-16	2
IL443-7X75	2	1-1/4	1	3/4	1/2-13	3/4
IL443-7X2	2	1-1/4	1	3/4	1/2-13	2
IL444-5X1	2-1/2	1-19/32	1-9/32	15/16	5/16-18	1
IL444-6X1	2-1/2	1-19/32	1-9/32	15/16	3/8-16	1
IL444-7X1	2-1/2	1-19/32	1-9/32	15/16	1/2-13	1
IL445-6FX1	3-1/8	2	1-21/32	1-3/16	3/8-24	1
IL445-6X1	3-1/8	2	1-21/32	1-3/16	3/8-16	1
IL445-7FX1	3-1/8	2	1-21/32	1-3/16	1/2-20	1
IL445-7X1	3-1/8	2	1-21/32	1-3/16	1/2-13	1



### 4 Lobe Knobs

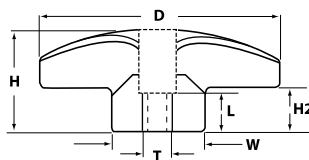
Phenolic 4-lobe knobs are offered with a brass threaded insert, a zinc-plated steel stud or a stainless steel stud.



#### PHENOLIC 4 LOBE KNOB WITH 303 STAINLESS STEEL STUD

P/N	DIA.	Height	Width	H2	Thread	Length
IL442-2X50-SS	1-1/2	1	27/32	19/32	8-32	1/2
IL442-2X1-SS	1-1/2	1	27/32	19/32	8-32	1
IL442-3FX50-SS	1-1/2	1	27/32	19/32	10-32	1/2
IL442-3FX1-SS	1-1/2	1	27/32	19/32	10-32	1
IL442-4X75-SS	1-1/2	1	27/32	19/32	1/4-20	3/4
IL445-4X75-SS	2	1	27/32	19/32	1/4-20	3/4
IL445-5X50-SS	2	1	27/32	19/32	5/16-18	1/2
IL445-5X1-SS	2	1	27/32	19/32	5/16-18	1

Phenolic 4-lobe thru hole knobs are offered with a brass threaded insert.



#### PHENOLIC 4 LOBE KNOB THRU HOLE WITH BRASS THREADED INSERT

P/N	DIA.	Height	Width	H2	Thread	Length
IL446-2X38	1	5/8	1/2	11/32	8-32	3/8
IL446-3FX38	1	5/8	1/2	11/32	10-32	3/8
IL446-4X50	1	5/8	1/2	11/32	1/4-20	3/8
IL447-3FX38	1-1/4	25/32	21/32	15/32	10-32	3/8
IL447-4X38	1-1/4	25/32	21/32	15/32	1/4-20	3/8
IL448-4X38	1-1/2	1	27/32	19/32	1/4-20	3/8
IL448-5X50	1-1/2	1	27/32	19/32	5/16-18	1/2
IL448-6X50	1-1/2	1	27/32	19/32	3/8-16	1/2
IL449-4X38	2	1-1/4	1	3/4	1/4-20	3/8
IL449-5X1/2	2	1-1/4	1	3/4	5/16-18	1/2
IL449-6FX50	2	1-1/4	1	3/4	3/8-24	1/2
IL449-6X50	2	1-1/4	1	3/4	3/8-16	1/2
IL449-7FX75	2	1-1/4	1	3/4	1/2-20	3/4
IL449-7X75	2	1-1/4	1	3/4	1/2-13	3/4
IL449A-5x50-TH	2-1/4	1	1	7/16	5/16-18	1/2
IL449A-6x50-TH	2-1/4	1	1	7/16	3/8-16	1/2
IL449B-4X62-TH	3	1-1/4	7/8	9/16	1/4-20	5/8
IL449B-4FX62-TH	3	1-1/4	7/8	9/16	1/4-28	5/8
IL449B-5X62-TH	3	1-1/4	7/8	9/16	5/16-18	5/8
IL449B-6X62-TH	3	1-1/4	7/8	9/16	3/8-16	5/8