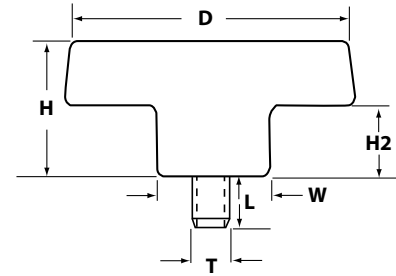




**KNOBS**  
**2 & 3 LOBE KNOBS**

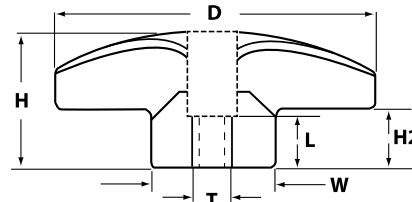
**2 & 3 Lobe Knobs**

Phenolic 2 & 3-lobe knobs are offered with a brass threaded insert, a zinc-plated steel stud or a stainless steel stud.



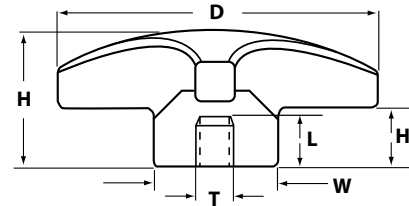
**PHENOLIC 2 LOBE KNOB WITH 303 STAINLESS STEEL STUD**

P/N	Dia.	Height	Width	H2	Thread	Length
IL423-4X75-SS	2	1-1/8	3/4	1/2	1/4-20	3/4
IL423-5X50-SS	2	1-1/8	3/4	1/2	5/16-18	1/2
IL423-5X1-SS	2	1-1/8	3/4	1/2	5/16-18	1
IL423-6X1-SS	2	1-1/8	3/4	1/2	3/8-16	1



**PHENOLIC 3 LOBE THRU HOLE WITH BRASS THREADED INSERT**

P/N	DIA.	Height	Width	H2	Thread	Length
IL424-3FX25-TH	1-1/8	3/4	1/2	1/4	10-32	1/4
IL424-4X25-TH	1-1/2	7/8	5/8	1/4	1/4-20	1/4
IL424-5X25-TH	1-1/2	7/8	5/8	1/4	5/16-18	1/4
IL424-5X38-TH	2	1	3/4	3/8	5/16-18	3/8
IL424-6X25-TH	1-1/2	7/8	5/8	1/4	3/8-16	1/4
IL424-6X38-TH	2	1	3/4	3/8	3/8-16	3/8



**PHENOLIC 3 LOBE KNOB WITH BRASS THREAD INSERT**

P/N	Dia.	Height	Width	H2	Thread	Length
IL424-4X38	1-1/2	29/32	19/32	9/16	1/4-20	3/8
IL424-5X50	1-1/2	29/32	19/32	9/16	5/16-18	1/2
IL424-6X50	1-1/2	29/32	19/32	9/16	3/8-16	1/2
IL425-5X75	2-1/2	1-1/8	7/8	1/2	5/16-18	3/4
IL425-5x50	2-1/2	1-1/8	7/8	1/2	3/8-16	1
IL425-6x50	2-1/2	1-1/8	7/8	3/4	1/2-13	1



**INTERNATIONAL EQUIPMENT COMPONENTS, INC.**

Phone: **562.597.4533** eMail: **sales@iec-corp.com**

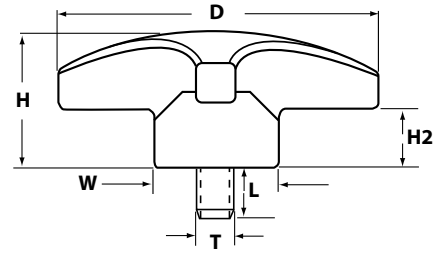
Web: **www.levelingmounts.com & www.iec-corp.com**

**KNOBS**

**3 LOBE KNOBS**

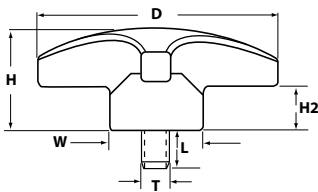
### 3 Lobe Knobs

Phenolic 3-lobe knobs are offered with a brass threaded insert, a zinc-plated steel stud or a stainless steel stud.



#### PHENOLIC 3 LOBE KNOB WITH ZINC PLATED STEEL STUD

P/N	DIA.	Height	Width	H2	Thread	Length
IL426B-2X50	7/8	3/4	1/2	3/8	8-32	1/2
IL426B-3FX50	7/8	3/4	1/2	3/8	10-32	1/2
IL426B-3FX75	7/8	3/4	1/2	3/8	10-32	3/4
IL426B-4X50	7/8	3/4	1/2	3/8	1/4-20	1/2
IL426A-3FX44	1-1/8	3/4	1/2	1/4	10-32	7/16
IL426A-3FX1	1-1/8	3/4	1/2	1/4	10-32	1
IL426A-4X50	1-1/8	3/4	1/2	1/4	1/4-20	1/2
IL426A-4X75	1-1/8	3/4	1/2	1/4	1/4-20	3/4
IL426A-4X1	1-1/8	3/4	1/2	1/4	1/4-20	1
IL426A-4X150	1-1/8	3/4	1/2	1/4	1/4-20	1-1/2
IL426-4X56	1-1/2	7/8	5/8	1/4	1/4-20	9/16
IL426-4X75	1-1/2	7/8	5/8	1/4	1/4-20	3/4
IL426-4X1	1-1/2	7/8	5/8	1/4	1/4-20	1
IL426-5X50	1-1/2	7/8	5/8	1/4	5/16-18	1/2
IL426-5X75	1-1/2	7/8	5/8	1/4	5/16-18	3/4
IL426-5X1	1-1/2	7/8	5/8	1/4	5/16-18	1
IL427-4X1	2	1	3/4	3/8	1/4-20	1
IL427-5X75	2	1	3/4	3/8	5/16-18	3/4
IL427-5X1	2	1	3/4	3/8	5/16-18	1
IL427-6X50	2	1	3/4	3/8	3/8-16	1/2
IL427-6X75	2	1	3/4	3/8	3/8-16	3/4
IL427-6X1	2	1	3/4	3/8	3/8-16	1



#### PHENOLIC 3 LOBE KNOB WITH 303 STAINLESS STEEL STUD

P/N	DIA.	Height	Width	H2	Thread	Length
IL426-3FX1-SS	1-1/2	3/4	5/8	1/8	10-32	1
IL426-4X75-SS	1-1/2	7/8	5/8	1/4	1/4-20	3/4
IL426-4X150-SS	1-1/2	7/8	5/8	1/4	1/4-20	1-1/2
IL426-5X50-SS	1-1/2	3/4	5/8	1/8	5/16-18	1/2
IL426-5X1-SS	1-1/2	7/8	5/8	1/4	5/16-18	1
IL426-6X150-SS	1-1/2	7/8	5/8	1/4	3/8-16	1-1/2
IL427-4X75-SS	2	1	3/4	3/8	1/4-20	3/4
IL427-5X50-SS	2	1	3/4	3/8	5/16-18	1/2
IL427-5X1-SS	2	1	3/4	3/8	5/16-18	1
IL427-6X150-SS	2	1	3/4	3/8	3/8-16	1-1/2



**INTERNATIONAL EQUIPMENT COMPONENTS, INC.**

Phone: **562.597.4533** eMail: **sales@iec-corp.com**

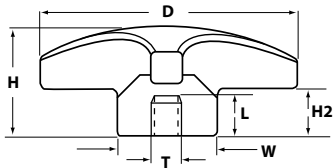
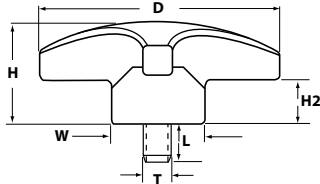
Web: **www.levelingmounts.com & www.iec-corp.com**

**KNOBS**

**3 & 4 LOBE KNOBS**

**3 & 4 Lobe Knobs**

Phenolic 3 and 4-lobe knobs are offered with a brass threaded insert, a zinc-plated steel stud or a stainless steel stud.



**THERMOPLASTIC 3 LOBE KNOB WITH STEEL STUD**

P/N	DIA.	Height	Width	H2	Thread	Length
IL427A-5X1	2-1/2	1-1/8	7/8	1/2	5/16-18	1
IL427A-6X1	2-1/2	1-1/8	7/8	1/2	3/8-16	1
IL427A-7X1	2-1/2	1-1/8	7/8	1/2	1/2-13	1
IL427B-5X118	3-3/8	1-1/2	1-3/16	5/8	5/16-18	1-3/16
IL427B-6X118	1-1/2	1-1/2	1-3/16	5/8	3/8-16	1-3/16
IL427B-7X118	1-1/2	1-1/2	1-3/16	5/8	1/2-13	1-3/16
IL427C-6X118	2	1-3/4	1-3/8	3/4	3/8-16	1-3/16
IL427C-7X118	2	1-3/4	1-3/8	3/4	1/2-13	1-3/16
IL427C-8X118	2	1-3/4	1-3/8	3/4	5/8-11	1-3/16

**PHENOLIC 4 LOBE KNOB WITH BRASS THREADED INSERT**

P/N	DIA.	Height	Width	H2	Thread	Length
IL430-2X38	1	5/8	1/2	11/32	8-32	3/8
IL430-3FX38	1	5/8	1/2	11/32	10-32	3/8
IL430-3X38	1	5/8	1/2	11/32	10-24	3/8
IL430-4X38	1	5/8	1/2	11/32	1/4-20	3/8
IL431-3FX38	1-1/4	25/32	21/32	15/32	10-32	3/8
IL431-4X38	1-1/4	25/32	21/32	15/32	1/4-20	3/8
IL431-5X50	1-1/4	25/32	21/32	15/32	5/16-18	1/2
IL432-4X38	1-1/2	1	27/32	19/32	1/4-20	3/8
IL432-5FX50	1-1/2	1	27/32	19/32	5/16-24	1/2
IL432-5X50	1-1/2	1	27/32	19/32	5/16-18	1/2
IL432-6FX50	1-1/2	1	27/32	19/32	3/8-24	1/2
IL432-6X50	1-1/2	1	27/32	19/32	3/8-16	1/2
IL433-4X38	2	1-1/4	1	3/4	1/4-20	3/8
IL433-5FX50	2	1-1/4	1	3/4	5/16-24	1/2
IL433-5X50	2	1-1/4	1	3/4	5/16-18	1/2
IL433-6FX50	2	1-1/4	1	3/4	3/8-24	1/2
IL433-6X50	2	1-1/4	1	3/4	3/8-16	1/2
IL433-7FX75	2	1-1/4	1	3/4	1/2-20	3/4
IL433-7X75	2	1-1/4	1	3/4	1/2-13	3/4
IL434-5FX50	2-1/2	1-19/32	1-9/32	15/16	5/16-24	1/2
IL434-5X50	2-1/2	1-19/32	1-9/32	15/16	5/16-18	1/2
IL434-6FX50	2-1/2	1-19/32	1-9/32	15/16	3/8-24	1/2
IL434-6X50	2-1/2	1-19/32	1-9/32	15/16	3/8-16	1/2
IL434-7FX75	2-1/2	1-19/32	1-9/32	15/16	1/2-20	3/4
IL434-7X75	2-1/2	1-19/32	1-9/32	15/16	1/2-13	3/4
IL435-6FX50	3-1/8	2	1-21/32	1-3/16	3/8-24	1/2
IL435-6X50	3-1/8	2	1-21/32	1-3/16	3/8-16	1/2
IL435-7FX75	3-1/8	2	1-21/32	1-3/16	1/2-20	3/4
IL435-7X75	3-1/8	2	1-21/32	1-3/16	1/2-13	3/4