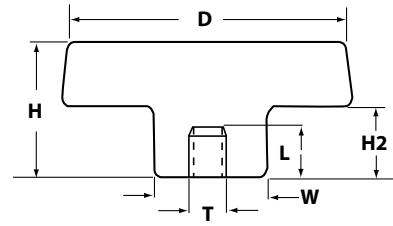




KNOBS
2 LOBE KNOBS

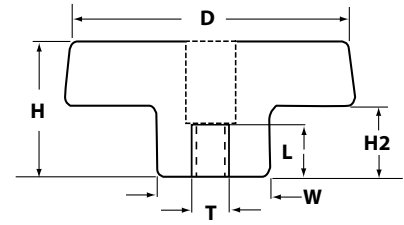
2 Lobe Knobs

Phenolic 2-lobe knobs are offered with a brass threaded insert, a zinc-plated steel stud or a stainless steel stud.



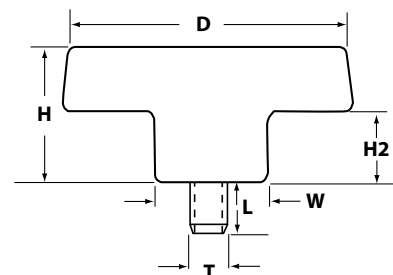
PHENOLIC 2 LOBE KNOB WITH BRASS THREAD INSERT

P/N	DIA.	Height	Width	H2	Thread	Length
IL422-4X38	2	1-1/8	3/4	1/2	1/4-20	3/8
IL422-5X50	2	1-1/8	3/4	1/2	5/16-18	1/2
IL422-6X50	2	1-1/8	3/4	1/2	3/8-16	1/2



NYLON 2 LOBE KNOB THRU HOLE WITH STEEL THREADED INSERT

P/N	DIA.	Height	Width	H2	Thread	Length
IL422-4X38-TH	1-1/8	3/4	1/2	1/8	1/4-20	3/8
IL422-4X50-TH	1-1/8	3/4	1/2	1/8	1/4-20	1/2
IL422-4X44-TH	2-1/2	1-1/3	3/4	1/2	1/4-20	7/16
IL422-5X50-TH	2-1/2	1-1/3	3/4	1/2	5/16-18	1/2
IL422-6X62-TH	2-1/2	1-1/3	3/4	1/2	3/8-16	5/8



PHENOLIC 2 LOBE KNOB WITH ZINC PLATED STEEL STUD

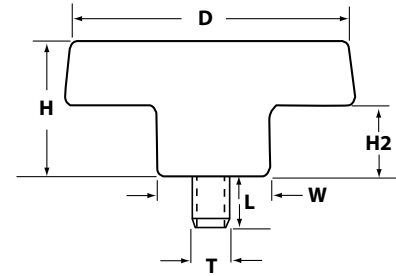
P/N	DIA.	Height	Width	H2	Thread	Length
IL423-4X50	1	5/8	1/2	1/8	1/4-20	1/2
IL423-5X75	2	1-1/8	3/4	1/2	5/16-18	3/4
IL423-6X1	2	1-1/8	3/4	1/2	3/8-16	1



KNOBS
2 & 3 LOBE KNOBS

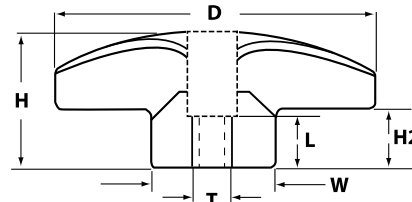
2 & 3 Lobe Knobs

Phenolic 2 & 3-lobe knobs are offered with a brass threaded insert, a zinc-plated steel stud or a stainless steel stud.



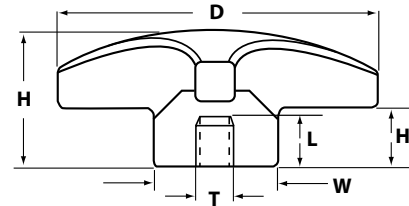
PHENOLIC 2 LOBE KNOB WITH 303 STAINLESS STEEL STUD

P/N	Dia.	Height	Width	H2	Thread	Length
IL423-4X75-SS	2	1-1/8	3/4	1/2	1/4-20	3/4
IL423-5X50-SS	2	1-1/8	3/4	1/2	5/16-18	1/2
IL423-5X1-SS	2	1-1/8	3/4	1/2	5/16-18	1
IL423-6X1-SS	2	1-1/8	3/4	1/2	3/8-16	1



PHENOLIC 3 LOBE THRU HOLE WITH BRASS THREADED INSERT

P/N	DIA.	Height	Width	H2	Thread	Length
IL424-3FX25-TH	1-1/8	3/4	1/2	1/4	10-32	1/4
IL424-4X25-TH	1-1/2	7/8	5/8	1/4	1/4-20	1/4
IL424-5X25-TH	1-1/2	7/8	5/8	1/4	5/16-18	1/4
IL424-5X38-TH	2	1	3/4	3/8	5/16-18	3/8
IL424-6X25-TH	1-1/2	7/8	5/8	1/4	3/8-16	1/4
IL424-6X38-TH	2	1	3/4	3/8	3/8-16	3/8



PHENOLIC 3 LOBE KNOB WITH BRASS THREAD INSERT

P/N	Dia.	Height	Width	H2	Thread	Length
IL424-4X38	1-1/2	29/32	19/32	9/16	1/4-20	3/8
IL424-5X50	1-1/2	29/32	19/32	9/16	5/16-18	1/2
IL424-6X50	1-1/2	29/32	19/32	9/16	3/8-16	1/2
IL425-5X75	2-1/2	1-1/8	7/8	1/2	5/16-18	3/4
IL425-5x50	2-1/2	1-1/8	7/8	1/2	3/8-16	1
IL425-6x50	2-1/2	1-1/8	7/8	3/4	1/2-13	1