



INTERNATIONAL EQUIPMENT COMPONENTS, INC.

Phone: **562.597.4533** eMail: **sales@iec-corp.com**

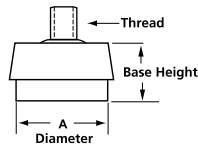
Web: **www.levelingmounts.com & www.iec-corp.com**

LIGHT-DUTY LEVELERS

THREADED GLIDES

Threaded Leveling Glides

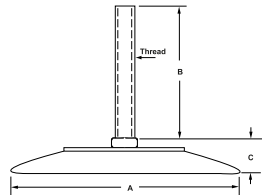
33-Self-Adjusting Levelers These *self-adjusting levelers* reduce table wobble. They feature an internal spring or a hydraulic spring (-HY).



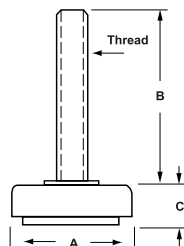
34-Table Wedge This *black rubber table leg wedge* is designed to stop table wobble or to be used as a shim.



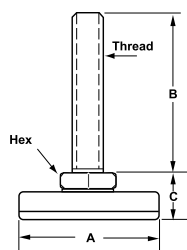
35-Big Foot Leveler These *large base levelers* are available in a black or white nylon base. To order white, replace "B" with "W".



36-Stainless Steel Swivel Leveling Glide These *304 stainless steel swivel glides* are free-rotating and swivel approximately 5° from the centerline. They are NSF certified. The black PVC base provides a non-skid and non-marring base. The 304 base can support much heavier loads.



37-Zinc-plated Steel Vibration Levelers These zinc-plated steel levelers have a waffle-type black neoprene pad that reduces vibration and provides grip. The stud swivels approximately 10° from the centerline.



33-IL46 Self-Adjusting Levelers

P/N	Thread x Length	Base Dia.	Height	1-24	25-99
IL46-4Bx38	1/4-20x3/8	1-1/4	1	\$3.30	\$3.14
IL46-5HBx75*	5/16-18x3/4	1-1/4	1	\$3.40	\$3.23
IL46-5HBx1*	5/16-18x1	1-1/4	1	\$4.20	\$3.99
IL46-4Bx38-HY	1/4-20x3/8	1-1/2	1-1/8	\$3.45	\$3.28
IL46-5Bx38-HY	5/16-18x3/8	1-1/2	1-1/8	\$3.55	\$3.37
IL46-6Bx38-HY	3/8-16x3/8	1-1/2	1-1/8	\$3.65	\$3.47
IL46-M6Bx10-HY	M6x10mm	1-1/2	1-1/8	\$3.75	\$3.56
IL46-M8Bx10-HY	M8x10mm	1-1/2	1-1/8	\$3.85	\$3.66
IL46-M10Bx10-HY	M10x10mm	1-1/2	1-1/8	\$3.95	\$3.75

* Hex above base

34-Table Leg Wedge

P/N	Height	Width	Length
IL46A-WEDGE-1	3/16	1-1/8	1-7/8

Part Nbr.	Thread	Hex	A	B	C	Base
-----------	--------	-----	---	---	---	------

35-Big Foot Leveler

IL47-5Bx15	5/16-18	YES	2-1/2	1-1/2	3/4	Black
IL47-5Bx25	5/16-18	YES	2-1/2	2-1/2	3/4	Black
IL47-6Bx15	3/8-16	YES	2-1/2	1-1/2	3/4	Black
IL47-6Bx25	3/8-16	YES	2-1/2	2-1/2	3/4	Black
IL47-6Bx35	3/8-16	YES	2-1/2	3-1/2	3/4	Black
IL47-7Bx25	1/2-13	YES	2-1/2	2-1/2	3/4	Black
IL47-7Bx35	1/2-13	YES	2-1/2	3-1/2	3/4	Black

Part Nbr.	Thread	Base	Load	A	B	C
-----------	--------	------	------	---	---	---

36-Stainless Steel Swivel Leveling Glide

IL48-6x125-90	3/8-16	PVC	90	1-1/4	13/16	5/8
IL48-6x156-175	3/8-16	PVC	175	1-9/16	13/16	5/8
IL48-6x2-220	3/8-16	PVC	220	2	13/16	5/8
IL48-6x125-440	3/8-16	S.S.	440	1-1/4	13/16	5/8
IL48-6x156-700	3/8-16	S.S.	700	1-9/16	13/16	5/8
IL48-6x2-220	3/8-16	S.S.	800	2	13/16	5/8

Part Nbr.	Thread	Hex	Load	A	B	C
-----------	--------	-----	------	---	---	---

37-Zinc Plated Steel Vibration Levelers

IL49-4x125-75	1/4-20	YES	75	1-1/2	1-1/4	1
IL49-4x125-150	1/4-20	YES	150	1-1/2	1-1/4	1
IL49-6x162-75	3/8-16	YES	75	2-1/8	1-5/8	1
IL49-6x162-150	3/8-16	YES	150	2-1/8	1-5/8	1
IL49-6x162-300	3/8-16	YES	300	2-1/8	1-5/8	1
IL49-7x175-75	1/2-13	YES	75	2-1/8	1-11/16	1
IL49-7x175-150	1/2-13	YES	150	2-1/8	1-11/16	1
IL49-7x175-300	1/2-13	YES	300	2-1/8	1-11/16	1
IL49-7x175-450	1/2-13	YES	450	2-1/8	1-11/16	1