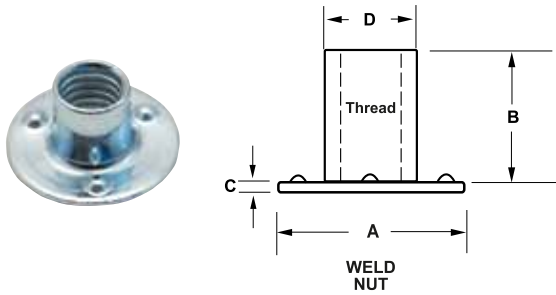


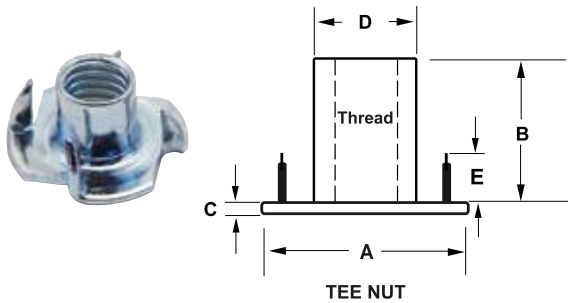


Weld & T-Nuts

15-Weld Nuts, Round Base (3 Bosses, Barrel Side) These *steel weld nuts* are zinc plated and designed for metal applications. Also available unplated and in stainless steel (add -SS to P/N) on select sizes.*



16-Pronged Tee-Nuts These *3 or 4 pronged steel t-nuts* are zinc plated and designed for wood applications. Some sizes also available in stainless steel (add -SS to P/N).*



17-Brackets These *steel corner bottom and side brackets* are zinc plated and designed for wood or metal applications. The corner bracket (-CB) also serves as a corner brace.



Side Bracket

Corner Bracket



Bottom Bracket

Part Number	Thread Size	(A) Flange Dia.	(B) Barrel Height	(D) Barrel Dia.	(C) Flange Thickness
15-Weld Nuts, Round Base					
IL28-2W	8-32	23/32	1/4	.209	.031
IL28-3AW	10-24*	3/4	9/32	.243	.039
IL28-3W	10-32*	3/4	9/32	.243	.039
IL28-4W	1/4-20*	3/4	5/16	.305	.047
IL28-4W2	1/4-20	3/4	7/8	.305	.047
IL28-5W	5/16-18*	7/8	3/8	.370	.055
IL28-5W2	5/16-18*	7/8	7/8	.375	.059
IL28-6W	3/8-16	1	7/16	.440	.063
IL28-6W2	3/8-16	1	5/8	.440	.063
IL28-7W	1/2-13	1-1/4	3/8	.591	.091
IL28-8W	5/8-11	1-7/16	3/8	.720	.091

Part Number	Thread Size	(A) Flange Dia.	(B) Barrel Height	(D) Barrel Dia.	(E) Prong Height	(C) Flange Thick.	Drill Size
16-T-Nuts, Straight Barrel (3 Prong)							
IL29-0T	4-40	23/64	1/8	.130	3/32	.024	9/64
IL29-1T	6-32	9/16	1/4	.162	5/32	.024	11/64
IL29-2T	8-32	23/32	1/4	.209	3/16	.031	7/32
IL29-3AT	10-24*	3/4	9/32	.243	3/16	.039	1/4
IL29-3AT2	10-24	3/4	3/8	.243	9/32	.039	1/4
IL29-3T	10-32*	3/4	9/32	.243	3/16	.039	1/4
IL29-3T2	10-32	3/4	7/16	.243	5/16	.039	1/4
IL29-4T	1/4-20*	3/4	1/4	.305	1/8	.047	5/16
IL29-M6T	M6 x 1.0*	19.1	6.4	7.7	3.2	1.2	7.9
IL29-4T2	1/4-20*	3/4	7/16	.305	5/16	.047	5/16
IL29-4T3	1/4-20	3/4	9/16	.305	5/16	.047	5/16
IL29-5T	5/16-18*	7/8	3/8	.370	9/32	.055	3/8
IL29-5T2	5/16-18	7/8	5/8	.370	21/64	.055	3/8
IL29-6T	3/8-16	1	7/16	.440	5/16	.063	29/64

Part Number	Thread Size	(A) Flange Dia.	(B) Barrel Height	(D) Barrel Dia.	(E) Prong Height	(C) Flange Thick.	Drill Size
16A-T-Nuts, Straight Barrel (4 Prong)							
IL29-M8T	M8x1.25	22.2	15.9	9.4	7.9	1.4	9.5
IL29-6T2	3/8-16*	1	7/16	.460	5/16	.063	15/32
IL29-M10T	M10x1.5	25.4	11.1	11.5	7.9	1.6	11.5
IL29-6AT	3/8-24	1	7/16	.430	5/16	.063	29/64
IL29-7T	1/2-13	1-1/4	3/8	.591	7/32	.091	19/32
IL29-8T	5/8-11	1-7/16	3/8	.720	1/4	.091	23/32

Part Nbr.	Thread	Length	Width	Flange Length
-----------	--------	--------	-------	---------------

17-Corner Bracket

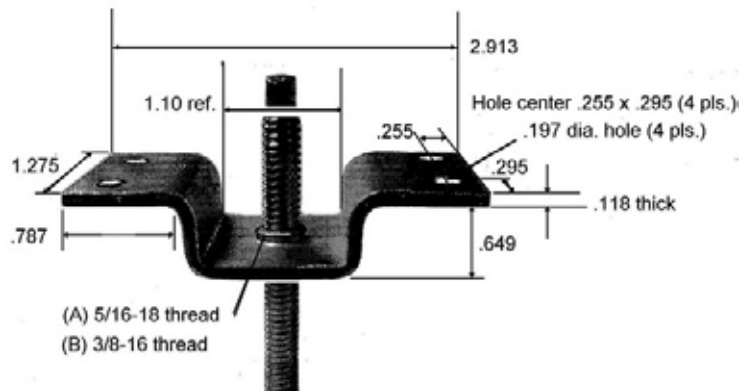
IL30-5-CB	5/16-18	3-7/8	1-3/8	7/8
IL30-6-CB	3/8-16	3-7/8	1-3/8	7/8

17-Side Bracket

IL30-5-SB	5/16-18	1-5/8	1-1/2	1-1/8
IL30-6-SB	3/8-16	1-5/8	1-1/2	1-1/8

17-Bottom Bracket

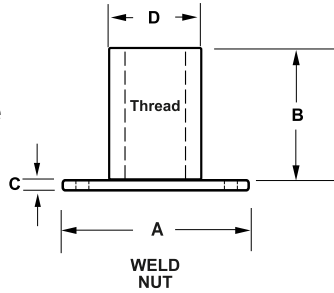
IL30-5-BB	5/16-18	2-3/4	1-1/4	7/8
IL30-6-BB	3/8-16	2-3/4	1-1/4	7/8





Weld Nuts/Round Nuts with Holes

IEC's *weld/hole nuts* allow a nail, drive screw or rivet to hold the threaded nut in place for wood applications. The holes also provide an anchoring point for parts molded of plastic, allowing the plastic to flow through the holes. In metal applications, the nut can be welded or riveted in place.



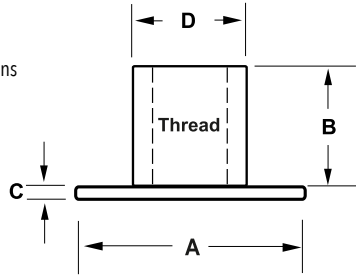
ROUND NUTS WITH HOLES (2 OR 3 HOLES)

Highly Stocked	Part Number	Thread Size	(A) Flange Dia.	(B) Barrel Height	(D) Barrel Dia.	Hole Dia.	(C) Flange Thickness
★	IL28-1H	6-32	9/16	1/4	.162	.075	.024
★	IL28-2H	8-32	23/32	1/4	.208	.098	.031
	IL28-3AH	10-24	3/4	9/32	.243	.098	.039
	IL28-3AH2	10-24	3/4	5/16	.243	.098	.039
★	IL28-3H	10.32	3/4	9/32	.243	.098	.039
	IL28-4H2	1/4-20	3/4	1/4	.305	.098	.047
★	IL28-4H	1/4-20	3/4	5/16	.305	.098	.047
★	IL28-M6H	M6x1.0	19.1	7.9	7.7	2.5	1.2
	IL28-4H3	1/4-20	3/4	7/16	.305	.098	.047
	IL28-4H4 IL28-M6H2	1/4-20 M6x1.0	3/4 19.1	9/16 14.3	.305 7.7	.098 2.5	.047 1.2
	IL28-4H5	1/4-20	3/4	7/8	.305	.098	.047
★	IL28-5H	5/16-18	7/8	3/8	.370	.098	.055
★	IL28-M8H	M8x1.25	22.2	9.5	9.4	2.5	1.4
	IL28-5H2 IL28-M8H2	5/16-18 M8x1.25	7/8 22.2	5/8 15.9	.370 9.4	.098 2.5	.055 1.4
	IL28-5H3	5/16-18	7/8	7/8	.375	.098	.059
	IL28-5AH	5/16-24	7/8	3/8	.390	.098	.063
★	IL28-6H	3/8-16	1	7/16	.440	.145	.063
★	IL28-M10H	M10x1.5	25.4	11.1	11.5	3.7	1.6
	IL28-6H2	3/8-16	1-1/4	3/4	.464	.145	.071
★	IL28-7H	1/2-13	1-1/4	3/8	.591	.145	.091
★	IL28-8H	5/8-11	1-7/16	3/8	.720	.145	.091



Propeller Nuts

The deep ribs on these IEC *propeller nuts* provide positive retention for applications that may split with regular prong-type T-Nuts. Also popular in hard plastic applications. Also available unplated and in stainless steel (add -SS to P/N) on selected sizes indicated by an (*) after the P/N.



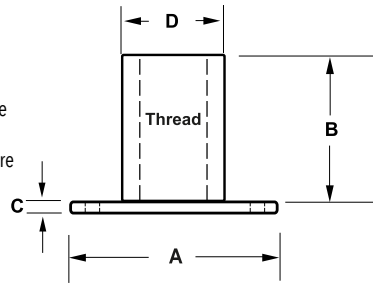
PROPELLER NUTS

Highly Stocked	Part Number	Thread Size	(A) Flange Dia.	(B) Barrel Height	(D) Barrel Dia.	Skive Length	Skive Dia.	(C) Flange Thicken.	Drill Size
★	IL29-2P	8-32	.500	1/4	.213	.100	.245	.039	13/64
	IL29-3AP	10-24	45/64	5/16	.255	.110	.300	.047	1/4
★	IL29-3P	10.32	19/32	15/64	.243	.118	.300	.039	1/4
★	IL29-4P*	1/4-20	3/4	5/16	.305	.155	.352	.047	?
	IL29-4P2	1/4-20	3/4	7/16	.305	.175	.352	.047	5/16
	IL29-4P3	1/4-20	3/4	9/16	.390	.175	.352	.047	5/16
★	IL29-5P*	5/16-18	7/8	3/8	.390	.245	.470	.063	?
	IL29-5P2	5/16-18	7/8	5/8	.390	1/4	.429	.063	25/64
	IL29-5P3	5/16-18	7/8	7/8	.385	9/32	.470	.059	25/64
★	IL29-6P*	3/8-16	1	7/16	.440	7/32	.535	.063	29/64
	IL29-6P2	3/8-16	1	5/8	.440	7/32	.535	.063	29/64
★	IL29-7P	1/2-13	1-1/4	3/8	.580	13/64	.690	.091	19/32
★	IL29-8P	5/8-11	1-1/4	3/8	.730	13/64	.840	.091	47/64



Weld Nuts/Rectangular Nuts with Holes

These IEC *rectangular nuts* with holes allow a nail, screw or rivet to hold the threaded nut in place for both wood and plastic applications. They also can be used in weld applications. Also available unplated and in stainless steel (add -SS to P/N) on selected sizes indicated by an (*) after the P/N. Note: SS nuts are stocked without holes.



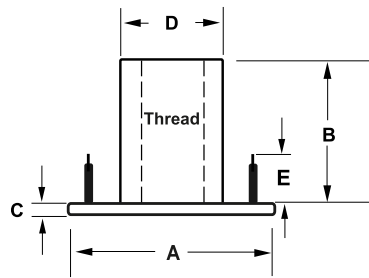
RECTANGULAR NUTS WITH HOLES

Highly Stocked	Part Number	Thread Size	(A) Flange Length	Flange Width	(B) Barrel Height	(D) Barrel Dia.	Hole Dia.	(C) Flange Thickness
★	IL28-2R*	8-32	23/32	7/16	1/4	.209	.098	.031
	IL28-3AR	10-24	3/4	1/2	9/32	.243	.098	.039
★	IL28-3R	10-32	3/4	1/2	9/32	.243	.098	.039
★	IL28-4R	1/4-20	3/4	1/2	5/16	.305	.130	.047
	IL28-4R2	1/4-20	3/4	1/2	7/16	.305	.130	.047
★	IL28-4R3	1/4-20	3/4	1/2	9/16	.305	.130	.047
	IL28-4R4	1/4-20	3/4	1/2	7/8	.305	.098	.047
★	IL28-5R*	5/16-18	7/8	9/16	3/8	.305	.130	.055
	IL28-5R2	5/16-18	7/8	9/16	5/8	.370	.098	.055
★	IL28-6R*	3/8-16	1	5/8	7/16	.440	.142	.063
	IL28-M10R	M10x 1.5	25.4	15.9	11.1	11.5	3.6	1.6
★	IL28-7R	1/2-13	1-3/8	1-3/8	7/16	.591	.165	.091

IL28-7R has a square Base with 4 holes

Rectangular T-Nuts

These IEC *rectangular t-nuts* can be used in applications for wood or plastic where space is restricted.



RECTANGULAR T-NUTS

Highly Stocked	Part Number	Thread Size	(A) Flange Dia.	Flange Width	(B) Barrel Height	(D) Barrel Dia.	(E) Prong Height	(C) Flange Thickness
★	IL29-2R	8-32	23/32	1/2	1/4	.209	5/32	.031
	IL29-3AR	10-24	3/4	1/2	9/32	.243	1/4	.039
★	IL29-3R	10-32	3/4	1/2	9/32	.243	15/64	.039
	IL29-4R2	1/4-20	3/4	1/2	1/4	.305	15/64	.047
★	IL29-4R	1/4-20	3/4	1/2	5/16	.305	1/4	.047
	IL29-4R3	1/4-20	3/4	1/2	7/16	.305	15/64	.047
	IL29-4R4	1/4-20	3/4	1/2	9/16	.305	15/64	.047
★	IL29-5R	5/16-18	7/8	9/16	3/8	.390	5/16	.063
	IL29-5R2	5/16-18	7/8	9/16	5/8	.370	9/32	.059
★	IL29-6R	3/8-16	1/1	5/8	7/16	.440	5/16	.063